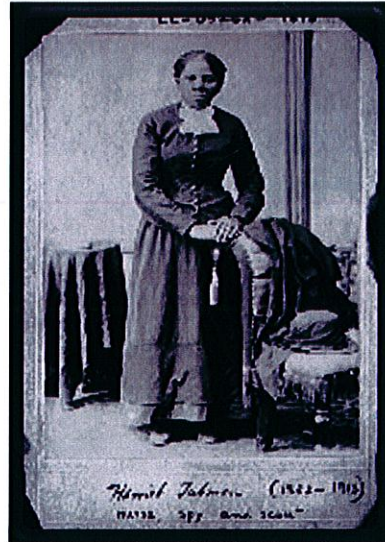


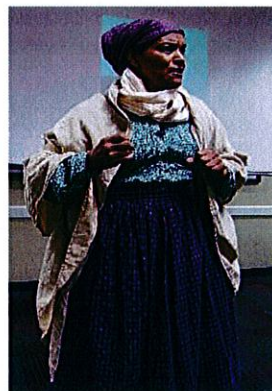
Flagler County Public Library Presents  
A Live Performance by Mary Kelly  
*"Midnight Train: Harriet Tubman on the  
Underground Railroad"*



"Every great dream begins with a dreamer. Always remember, you have within you the strength, the patience, and the passion to reach for the stars to change the world."

Tuesday, February 13, 2018  
@ 2:00 p.m.

Located in the Doug Cisney Room with Refreshments  
Provided by the Friends of the Library



Performer: Mary Kelly

Sponsored by: Florida Specific Cultural Project Touring Grant